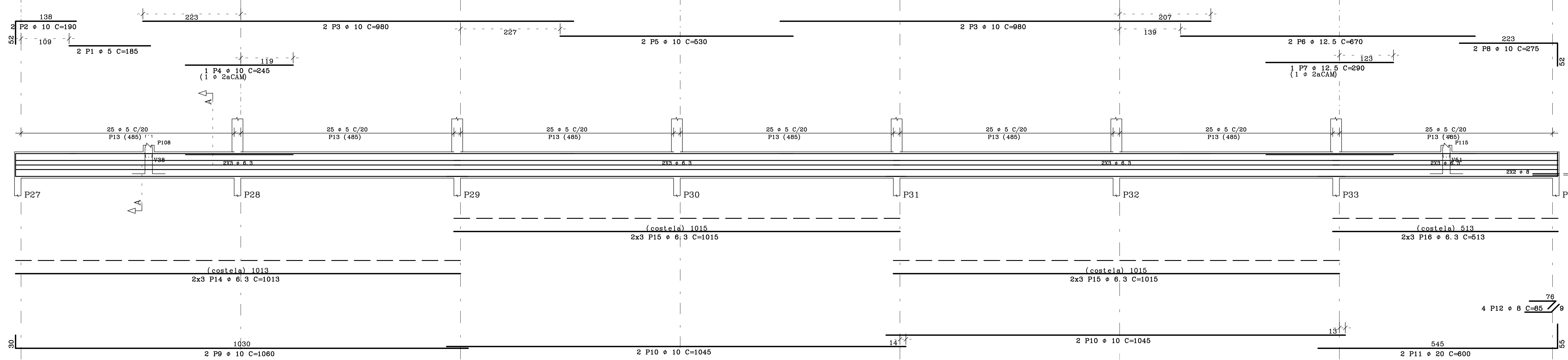
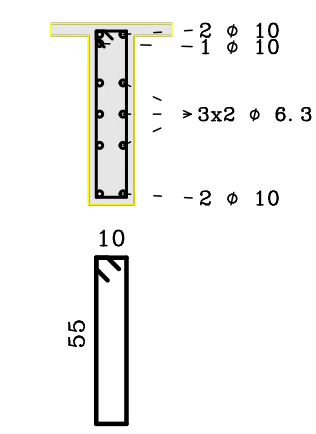


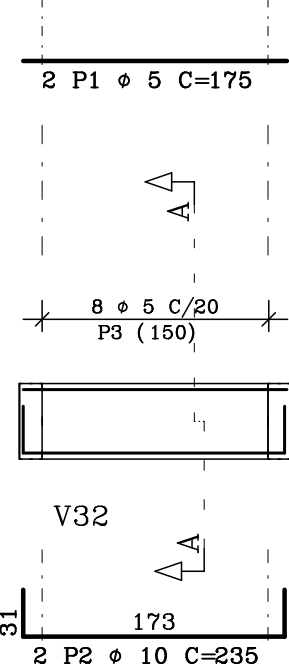
V7 15/60



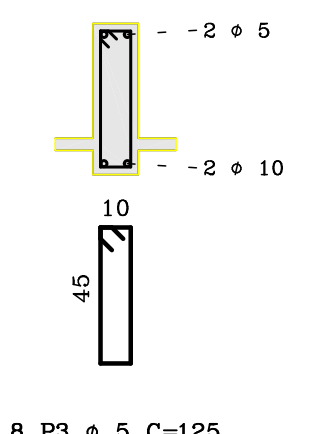
Corte A



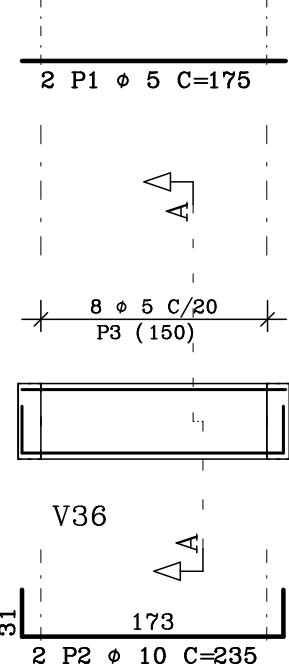
V8 15/50



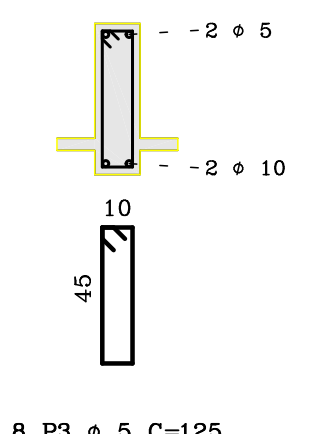
Corte A



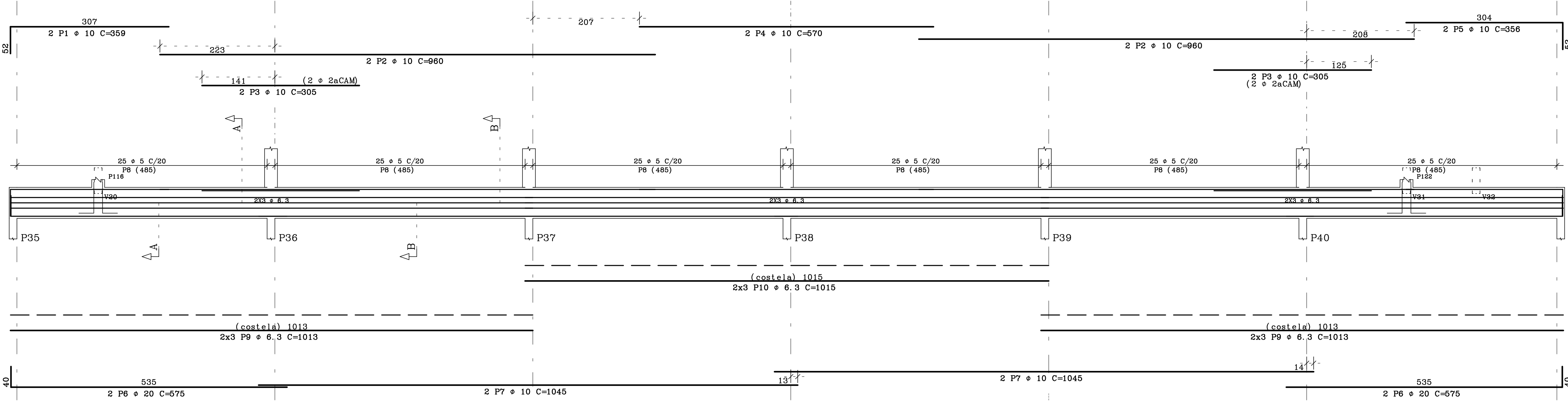
V9 15/50



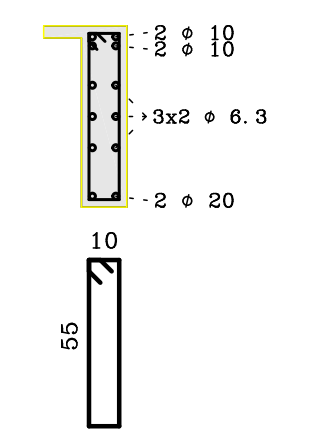
Corte A



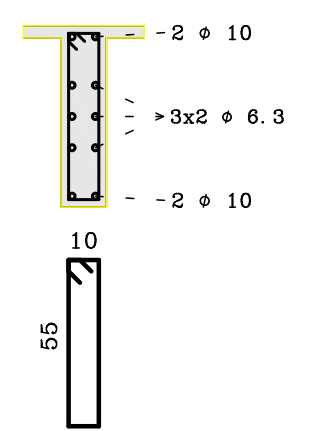
V10 15/60



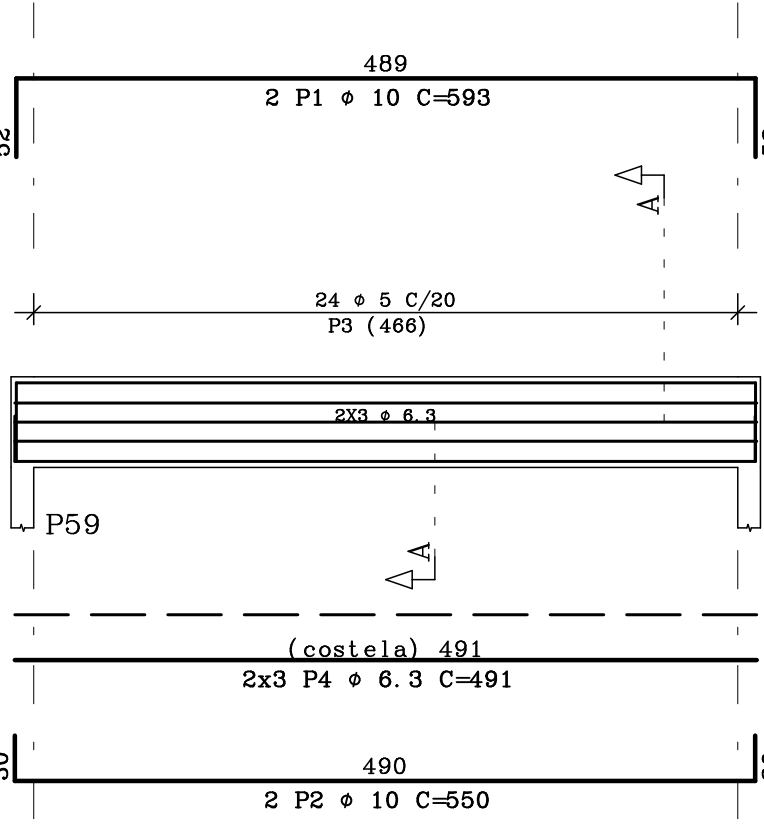
Corte A



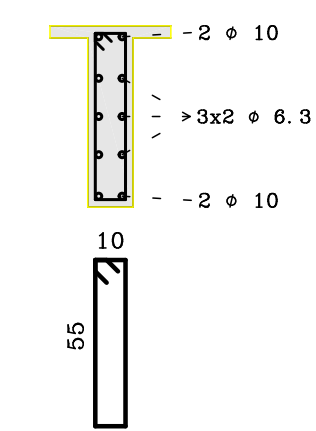
Corte B



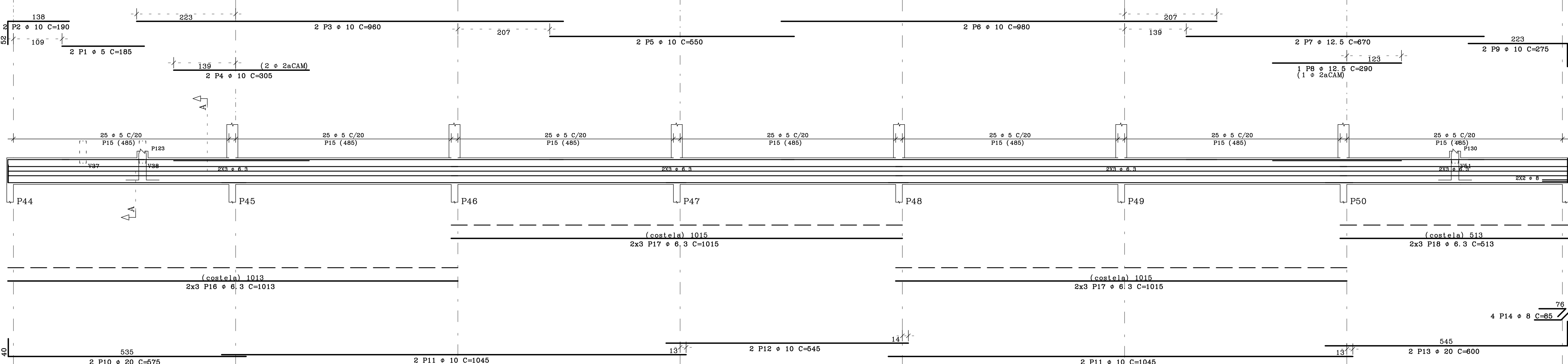
V13 15/60



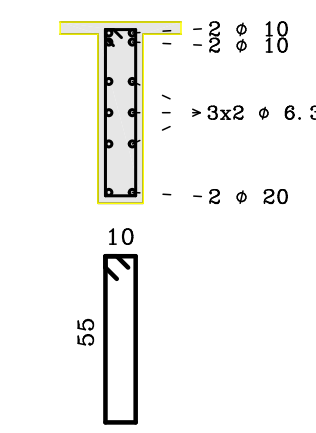
Corte A



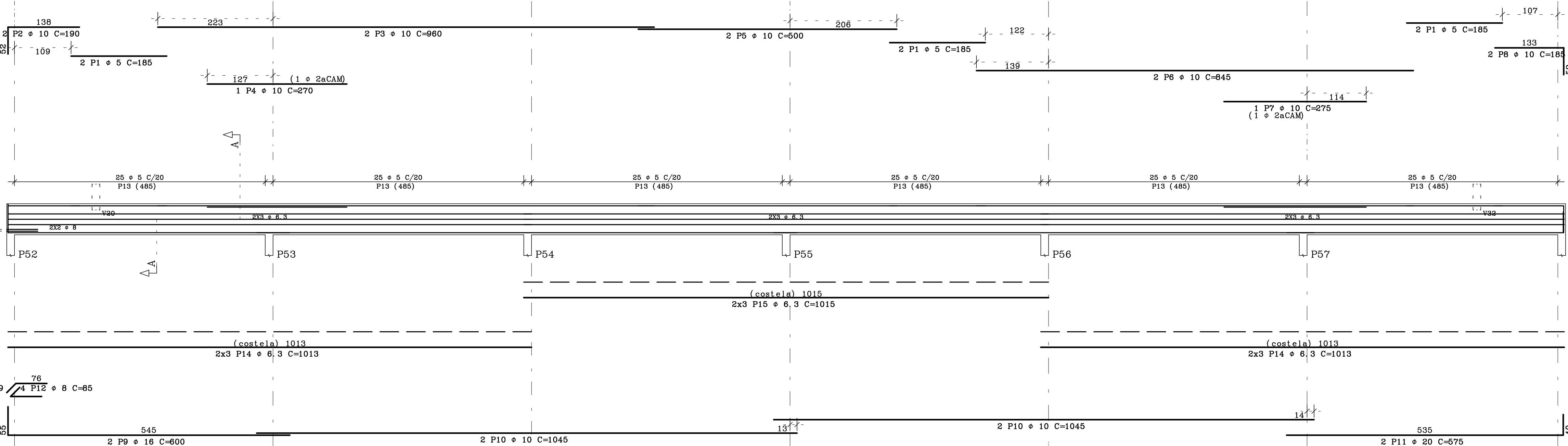
V11 15/60



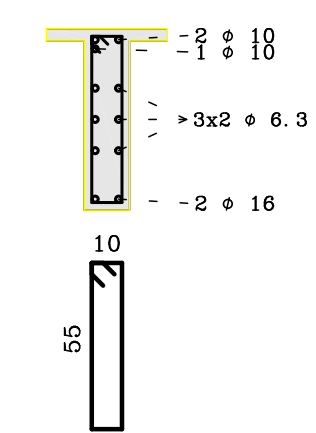
Corte A



V12 15/60



Corte A



| ACO | POS | BIT (mm) | QUANT | COMPRIMENTO (cm) | UNID | TOTAL |
|-----|-----|----------|-------|------------------|------|-------|
| V7 | 40 | 1 | 5 | 2 | 185 | 370 |
| | 50A | 2 | 10 | 2 | 190 | 380 |
| | 50A | 3 | 10 | 4 | 980 | 3820 |
| | 50A | 4 | 10 | 1 | 245 | 245 |
| | 50A | 5 | 10 | 2 | 530 | 1060 |
| | 50A | 6 | 12.5 | 1 | 270 | 1340 |
| | 50A | 7 | 12.5 | 1 | 290 | 290 |
| | 50A | 8 | 10 | 2 | 275 | 550 |
| | 50A | 9 | 10 | 2 | 1060 | 2120 |
| | 50A | 10 | 10 | 4 | 1045 | 4180 |
| | 50A | 11 | 20 | 2 | 545 | 1090 |
| | 50A | 12 | 6 | 4 | 85 | 340 |
| | 50A | 13 | 5 | 175 | 145 | 25375 |
| | 50A | 14 | 6.3 | 6 | 1015 | 6078 |
| | 50A | 15 | 6.3 | 12 | 1015 | 12180 |
| | 50A | 16 | 6.3 | 6 | 515 | 3078 |
| V8 | 40 | 1 | 5 | 2 | 175 | 350 |
| | 50A | 2 | 10 | 2 | 235 | 470 |
| | 50A | 3 | 5 | 8 | 125 | 1000 |
| V9 | 40 | 1 | 10 | 2 | 175 | 350 |
| | 50A | 2 | 5 | 8 | 125 | 1000 |
| V10 | 50A | 1 | 10 | 2 | 359 | 718 |
| | 50A | 2 | 10 | 2 | 960 | 3840 |
| | 50A | 3 | 10 | 4 | 305 | 1220 |
| | 50A | 4 | 10 | 2 | 270 | 1140 |
| | 50A | 5 | 10 | 2 | 565 | 1130 |
| | 50A | 6 | 20 | 4 | 575 | 2300 |
| | 50A | 7 | 10 | 4 | 1045 | 4180 |
| | 50A | 8 | 5 | 160 | 145 | 21750 |
| | 50A | 9 | 6.3 | 12 | 1015 | 12156 |
| | 50A | 10 | 6.3 | 6 | 1015 | 6080 |
| V11 | 40 | 1 | 5 | 2 | 185 | 370 |
| | 50A | 2 | 10 | 2 | 190 | 380 |
| | 50A | 3 | 10 | 2 | 980 | 1920 |
| | 50A | 4 | 10 | 2 | 305 | 610 |
| | 50A | 5 | 10 | 1 | 560 | 1100 |
| | 50A | 6 | 10 | 2 | 980 | 1960 |
| | 50A | 7 | 12.5 | 1 | 270 | 1340 |
| | 50A | 8 | 12.5 | 1 | 290 | 290 |
| | 50A | 9 | 10 | 2 | 275 | 550 |
| | 50A | 10 | 20 | 2 | 575 | 1150 |
| | 50A | 11 | 10 | 4 | 1045 | 4180 |
| | 50A | 12 | 10 | 2 | 545 | 1090 |
| | 50A | 13 | 20 | 2 | 600 | 1200 |
| | 50A | 14 | 8 | 4 | 85 | 340 |
| | 50A | 15 | 5 | 175 | 145 | 25375 |
| | 50A | 16 | 6.3 | 6 | 1015 | 6078 |
| | 50A | 17 | 6.3 | 12 | 1015 | 12180 |
| | 50A | 18 | 6.3 | 6 | 515 | 3078 |
| V12 | 40 | 1 | 5 | 8 | 185 | 1110 |
| | 50A | 2 | 10 | 2 | 190 | 380 |
| | 50A | 3 | 10 | 2 | 960 | 1920 |
| | 50A | 4 | 10 | 1 | 270 | 270 |
| | 50A | 5 | 10 | 2 | 500 | 1000 |
| | 50A | 6 | 10 | 2 | 845 | 1690 |
| | 50A | 7 | 10 | 1 | 275 | 275 |
| | 50A | 8 | 10 | 2 | 185 | 370 |
| | 50A | 9 | 16 | 2 | 600 | 1200 |
| | 50A | 10 | 10 | 4 | 1045 | 4180 |
| | 50A | 11 | 20 | 2 | 575 | 1150 |
| | 50A | 12 | 8 | 4 | 85 | 340 |
| | 50A | 13 | 5 | 160 | 145 | 21750 |
| | 50A | 14 | 6.3 | 12 | 1015 | 12156 |
| | 50A | 15 | 6.3 | 6 | 1015 | 6090 |
| V13 | 50A | 1 | 10 | 2 | 593 | 1186 |
| | 50A | 2 | 10 | 2 | 550 | 1100 |
| | 50A | 3 | 5 | 24 | 145 | 3480 |
| | 50A | 4 | 6.3 | 6 | 491 | 2946 |

| ACO | BIT (mm) | COMPR (m) | PESO (kg) |
|------------|----------|-----------|-----------|
| 40 | 5 | 1025 | 184 |
| 50A | 6.3 | 821 | 205 |
| 50A | 8 | 10 | 4 |
| 50A | 10 | 494 | 311 |
| 50A | 12.5 | 33 | 38 |
| 50A | 15 | 12 | 19 |
| 50A | 20 | 70 | 175 |
| Peso Total | 60 | 164 | Kg |
| Peso Total | 50A | 747 | Kg |

| | | | |
|----------------------------------------------|---------------------|---------------------|---------------------|
| 10 | | | |
| 09 | | | |
| 08 | | | |
| 07 | | | |
| 06 | | | |
| 05 | | | |
| 04 | | | |
| 03 | | | |
| 02 | | | |
| 01 | | | |
| REVISÃO | ALTERAÇÕES | DATA | VISTO |
| MEDIDAS EM CENTÍMETROS E NÍVEIS EM METROS | | | |
| VERIFICAR MEDIDAS E NÍVEIS NA OBRA | | | |
| PROPRIETÁRIO | | | |
| PROJETO | | | |
| RESPONSÁVEL PELA OBRA | | | |
| OBRA | | CLIENTE | |
| UNIVERSIDADE FEDERAL DE ALAGOAS | | UFAL | |
| FACULDADE DE MEDICINA - BLOCO ADMINISTRATIVO | | | |
| CAMPUS A. C. SIMÕES - TABULEIRO DOS MARTINS | | | |
| MACRIO- ALAGOAS. | | | |
| ESPÉCIE: | | CONCRETO | |
| ARMACÕES DAS VIGAS DA COBERTA | | fck ≥ 25 MPa | |
| CÁLCULO | | CÁLCULO | |
| RND CIVIL | | RND CIVIL | |
| RAMON LUCIO | | RAMON LUCIO | |
| CREA | | CREA | |
| 020468630-0 | | 020468630-0 | |
| DATA | 09/10/2014 | ESCALA | INDICADA |
| DESIGNO | DESIGNO | DESIGNO | DESIGNO |
| INDICADA | INDICADA | INDICADA | INDICADA |
| CODIGO | CODIGO | CODIGO | CODIGO |
| COD. EMPREEND. | COD. EMPREEND. | COD. EMPREEND. | COD. EMPREEND. |
| F M A - E S T - P E | F M A - E S T - P E | F M A - E S T - P E | F M A - E S T - P E |
| 006 | 006 | 006 | 006 |
| 000 | 000 | 000 | 000 |
| 000 | 000 | 000 | 000 |